

The Groundbreaker

Summer 2008 Issue

CHASE SOARS!



Embraer Aircraft Holding, Inc., the world's leading manufacturer of regional commercial jets awarded D.F. Chase, Inc. new aviation opportunities this year in the states of Florida, Connecticut, and Arizona. The body of work includes; a Jet Service Center, a Spare Parts Warehouse, and Site Compliance Center in Ft. Lauderdale, FL., an Executive Jet Center in Windsor Locks, CT, and an Executive Jet Center in Mesa, AZ.

The owner/client relationship with Chase began in 1991 when Chase built a 70,000 SF service facility for FFV Aerotech in Nashville, TN. In 1994, Chase was called upon to add a 30,000 SF paint hanger to the facility. And, in 2006 was tapped to construct a 75,000 SF maintenance hangar for Embraer after they purchased the facilities from FFV. The project includes 25,000 SF of office and shop space, and a 50,000 SF hangar space to house the newest jets of Embraer's fleet.

In 2008, with Embraer's plans to expand its marketplace in several states, Chase was once again awarded the opportunity to partner with them and construct the new facilities. All the projects are underway and nearing completion.



Executive Jet Center



In the fall of 2007, The Chase team headed to Connecticut to begin work on the Executive Jet Center located at Bradley International Airport. The Jet Service Center is just one of three similar facilities that D.F. Chase is currently constructing for Embraer. The approximate 50,000 square foot facility includes; administrative, shop, service, and hangar bay areas. There is also a meeting area and pilot's lounge for Embraer's clients use.

The building consists of a structural steel frame with a hybrid metal skin system over the frame of the hangar bay. A standing seam roof and a textured masonry system make up the balance of the exterior, the offices, and service facilities. The interior of the structure has a high-end finish look with much attention given to detail, and comfort for Embraer clients, guests, and employees.

Owner: Embraer Aircraft Holding, Inc.
General Contractor: D. F. Chase, Inc.
Construction Schedule: Nov. 2007- Sept. 2008



Chase's Todd Craver, is the Sr. Project Manager for this facility. Todd states, "We are constructing this facility for Embraer and working closely with CDOT (Connecticut Dept. of Transportation—Division of Ports and Airports). CDOT owns the land and is also the governing code authority and fire marshal." Todd also says, "This has been a great experience for all involved and D.F. Chase is complimented daily on its expedient and quality work despite a record snow fall winter. Having great sub-contractors committed to good work is exemplified throughout the whole team effort."



Guy Ordway, the on-site Superintendent, is from the northeast, and his familiarity with the climate and working conditions for this part of the country has been a benefit in keeping the project moving. Guy says, "We have a great team up here and everybody has stepped up to the plate to do what they can to make the project as successful as possible".

Robert Dexter, Chase's Project Engineer, works both with Guy and Todd. His great attention to detail is put to good use in working on this caliber project, and his team building skills makes him an integral part of the Chase team.

Despite the snowy winter with record snowfalls and cold temperatures, the project remains on schedule and is expected to hit the targeted completion date of September 2008.

TIME MANAGEMENT

The Chase team thrives on working smart, staying within budget, and completing projects



Windsor Locks, CT

Embraer Jet Service Center



Owner: Embraer Aircraft Holding, Inc.
General Contractor: Chase Design-Build, LLC
Construction Schedule: Feb. 2008 - Dec. 2008

Ft. Lauderdale, FL is the home of Embraer Aircraft Holding, Inc. It has been headquartered there since 1979. Embraer is well known as one of the largest aircraft manufacturers in the world. The headquarters site features over 109,000 square feet of built facilities, which combines aircraft sales and post sales activities, including customer service, tech support, shipping and receiving of spare parts, etc. Embraer was Brazil's largest exporter from 1999 to 2001 and the second largest from 2002 through 2004.

As part of a nationwide expansion for Embraer's business class aircraft, Chase was enlisted to construct three jet service centers, one of which is located at their main campus in Fort Lauderdale. The service center is approximately 57,000 square feet. Similar to the projects in Connecticut and Arizona, this facility will include administrative, shop, and hangar spaces to facilitate in the performance of routine fly-in/fly-out maintenance. The building consists of a structural steel frame with a hybrid metal skin system over the frame of the hangar bay, a standing seam roof and textured masonry system make up the balance of the exterior, and at the offices and service facilities. The interior of the facility has a high-end finish look with much attention given to detail and comfort for Embraer clients, guest, and employees.



In addition to the service center, Embraer has tasked Chase to construct a new spare parts warehouse to increase the efficiency and size of its current operation. This facility is approximately 35,000 square feet, and includes some administrative spaces. It is constructed of concrete tilt panels with a bar joint and metal deck roof framing system. The concrete floor will have a light reflective shake on hardener finish that will be polished.

As a final touch to the campus, Chase will be completing a site overhaul. This work will include reworking all existing parking areas, adding a small guard house, and reworking and adding landscaping.

INTREGITY
QUALITY
PERFORMANCE

Warehouse and Site Compliance Center



David Frazier has been assigned as project manager to the project. He has familiarity working with Embraer as on-site project engineer during the construction of the Nashville maintenance hangar. He comments that "This project by far has been his most challenging to date, having to deal with an extremely stringent code process, and ever-changing project requirements."

David's on-site Chase team includes; Dan Pate, project superintendent, and Michelle G. Kuper, as the project engineer.

Dan brings over 20 years of construction experience to the table as a superintendent, and of his experience on this project Dan says "Working in Florida has it's challenges, but we have a good team and we are on top of the job."



Ft. Lauderdale, Florida

Embraer Jet Service Center



“Our desire is to provide our client a thorough analysis of the project and to properly select the most cost effective solutions to the particular construction opportunity.”

**Owner: Embraer Aircraft Holding, Inc.
General Contractor: D. F. Chase, Inc.
Construction Schedule: Nov. 2007—Sept. 2008**



The site for this project is located at the newly renamed Phoenix Mesa Gateway Airport, also known as WGA and formerly Williams Gateway Airport in Mesa, AZ. The airport is being developed quickly due to the overall population growth in the area and its close proximity to many large southwestern cities. It is uniquely situated in the desert flat terrain of Mesa with views all around of surface jutting rocks, cactus, and other southwestern plant landscapes.

This center is one of three similar facilities D.F. Chase is constructing for Embraer. All three Jet Service Centers are being built to house their new line of executive size jets that will soon be coming off the assembly line in Brazil. The total size of the Mesa facility is approximately 50,000 square feet, similar in size to those being built in Connecticut and Florida. The lot area is about six acres. The final site landscaping will include special selected cactus, other native plants, and rocks indigenous to the area. The building consists of a structural steel frame with a textured masonry system making up the balance of the exterior of the offices and service facilities. It has a high-end interior finish with much attention given to detail and comfort for Embraer clients, guest, and employees.



In difference to the cold northeast weather that the Connecticut project endured, this site holds new weather challenges because of the dry, hot desert conditions. Along with the Connecticut project, Todd Craver is the Sr. Project manager for this facility. Todd says "Constructing one of the first new facilities at any location is always an experience, especially in dealing with something that is new for everyone involved. The challenge here is dealing with what had previously been an old military base. You never know what surprises you will find when working on a re-use site like this, but the airport management group has been great to work with, as well as the team of sub-contractors on the project."



Jerry Pate is the on-site veteran Superintendent heading up the project, having particular expertise in aviation facilities. He says "the codes and airport folks have been our friends and have been very good to work with." Jerry's construction experience, along with having good people to work with, has brought about superior workmanship from everyone. The swift progress and quality of the project has drawn interest from other project company owners in the area for potential future project opportunities for Chase.

Marcus Pate, Chase's Project Engineer, works closely with Jerry and Mr. Ron Neilson, the Project Manager for Embraer and has proven to be a valuable member of the construction team.

Expectations are high for maintaining the scheduled completion date of early fall of 2008.



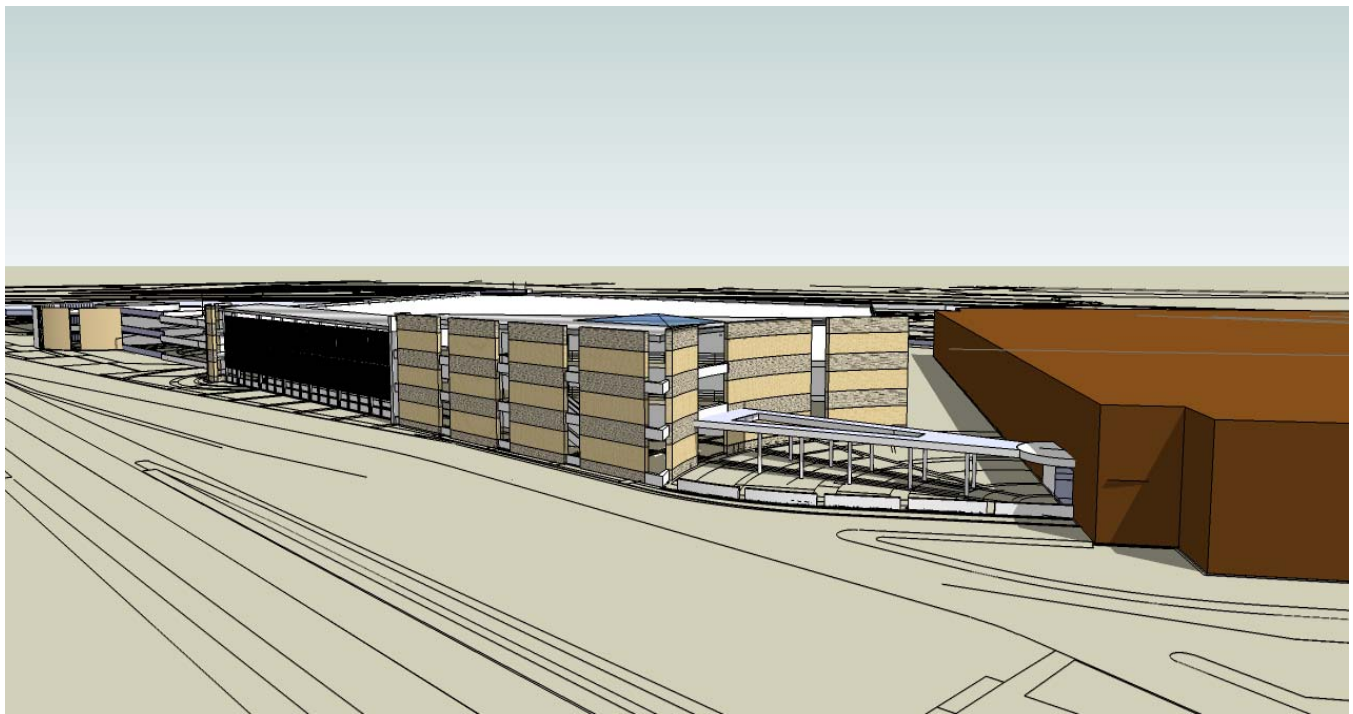
Mesa, Arizona

Metropolitan Nashville Airport Authority ConRAC

D.F. Chase, Inc., in partnership with Austin Commercial, a subsidiary of Dallas based Austin Industries, was recently awarded the project as Construction Manager for a consolidated rental car facility at Nashville International Airport. The complex will be a 3-story, concrete garage structure (pre-cast or cast-in-place) that will accommodate eight to ten rental car companies and provide a total of 2400 ready/return stalls. An adjacent area consisting of approximately 5.5 acres will include a quick-turn-around (QTA) facility consisting of minor maintenance and storage areas, vehicle washing facilities, vehicle fueling positions and stacking area.

Chase will provide pre-construction services, scheduling assistance, and the on-site Superintendent for field supervision of this important project.

Owner: MNA
Construction Manager
D.F. Chase, Inc. and Austin Commercial
Construction Schedule: Oct. 2008 - 2009



Nashville, Tennessee



D.F. Chase, Inc.
3001 Armory Drive
Suite 200
Nashville, TN 37204
Phone: 615-777-5900
Fax: 615-777-4544

We're on the web!
www.dfchase.com

We Build Relationships. We
Promise Service.



Chase Design-Build LLC
3001 Armory Drive
Suite 225
Nashville, TN 37204
Phone: 615-844-8000
Fax: 615-844-9000